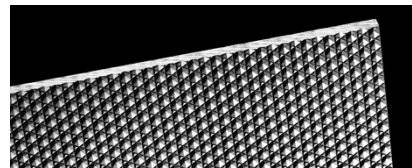

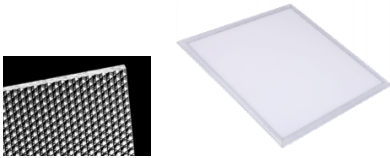

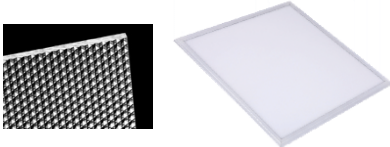
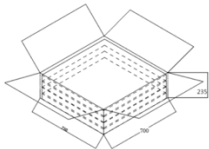
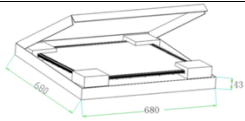




Ultra slim panel 36W



Product	lm/W	Descriptions	Driver
	105lm/W	LED A series DALI dimming panel with white stripe frame, Power:36W+-10% Lumen: 4500lm+-10% Input Voltage: AC100-240v, DALI CCT: 3000K/4000K, +/-300 CRI: >80 Size:595*595*10.8±0.5 Warranty: 3yrs Diffuser: Opak	Merrytek DALI driver 1. DALI, Push, 1-10V 2. Push, 1-10V
	105lm/W	LED A series DALI dimming panel with white stripe frame, Power:36W+-10% Lumen: 4300lm+-10% Input Voltage: AC100-240v, DALI CCT: 3000K/4000K, +/-300 CRI: >80 Size:595*595*10.8±0.5 Warranty: 3yrs Diffuser: MicroPrismatic	Merrytek DALI driver 1. DALI, Push, 1-10V 2. Push, 1-10V
	120lm/W (113lm/W)	Power:36W, AC100-240V CCT:3000K 4000K , CRI: >90 LED Type: Samsung 2835SMD LUMEN: 4500lm Size: 595*595*10 UGR<19 (80 degree beamangle) Diffuser: Opak	MERRYTEK/Meanwell Dali Driver:220-240V 960mA,123.5*81.5*2 3mm 1. DALI, Push, 1-10V 2. Push, 1-10V
	120lm/W (113lm/W)	Power:36W, AC100-240V CCT:3000K 4000K, CRI: >90 LED Type: Samsung 2835SMD LUMEN: 4300lm Size: 595*595*10 UGR<19 (80 degree beamangle) Diffuser: MicroPrismatic	MERRYTEK/Meanwell Dali Driver:220-240V 960mA,123.5*81.5*2 3mm 1. DALI, Push, 1-10V 2. Push, 1-10V

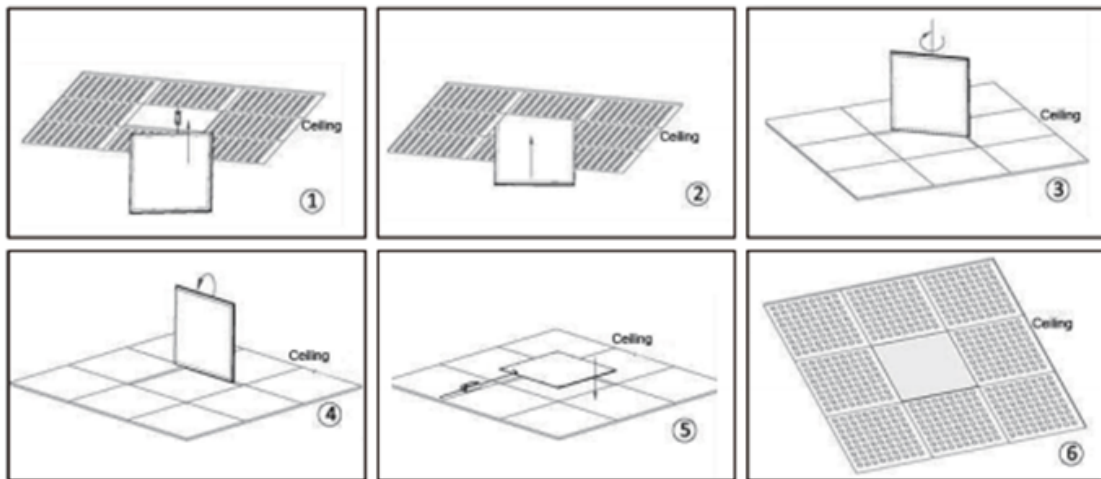


Packaging Information

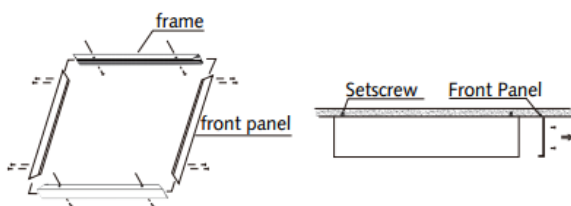
Inner Box: 680*680*43mm/pc, NW:4.1kg, GW:4.7kg
Carton: 700*700*235mm, Qty:5pcs/CTN, NW:18.8kg, GW:22kg

Installation Guide:

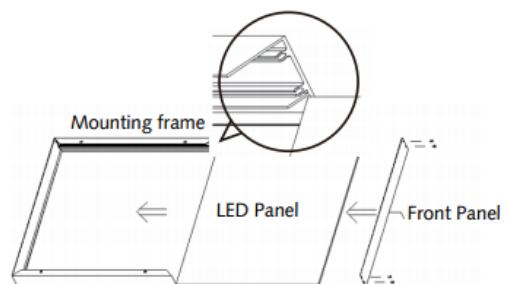
1. Recessed Mounted



2. Ceiling Mount



1. Dis-assemble the front panel of the mounting frame and mount the frame into ceiling by setscrew.



2. Slide the LED panel into the mounting frame, then screw in the front panel



3. Suspension

